

T & NO RAILROAD 100' R.O.W.

S 85° 25' 00" E 245.00'

S 59° 47' 04" E 37.98'

N 08° 21' 55" W 339.50'

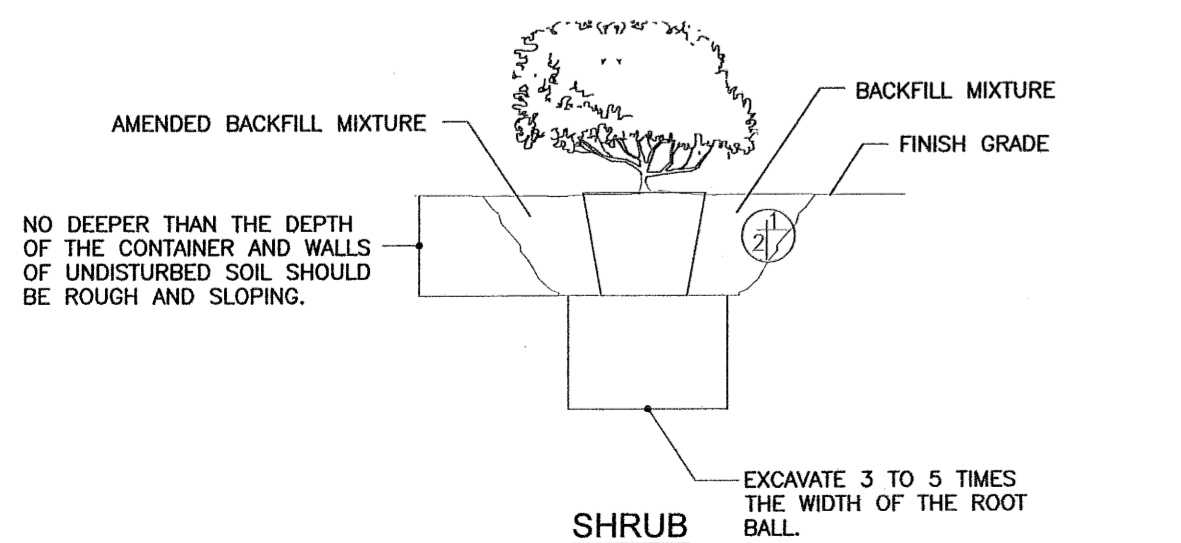
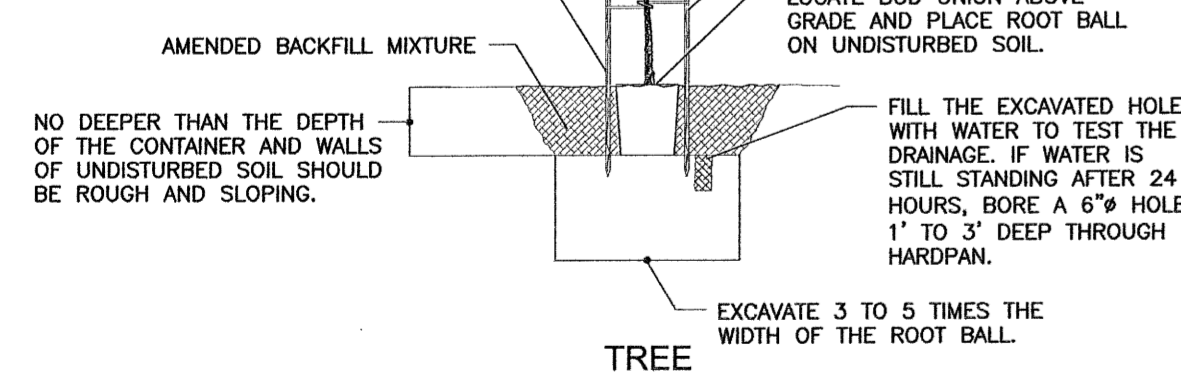
UNDEVELOPED LAND

C.F. HAWN FREEWAY

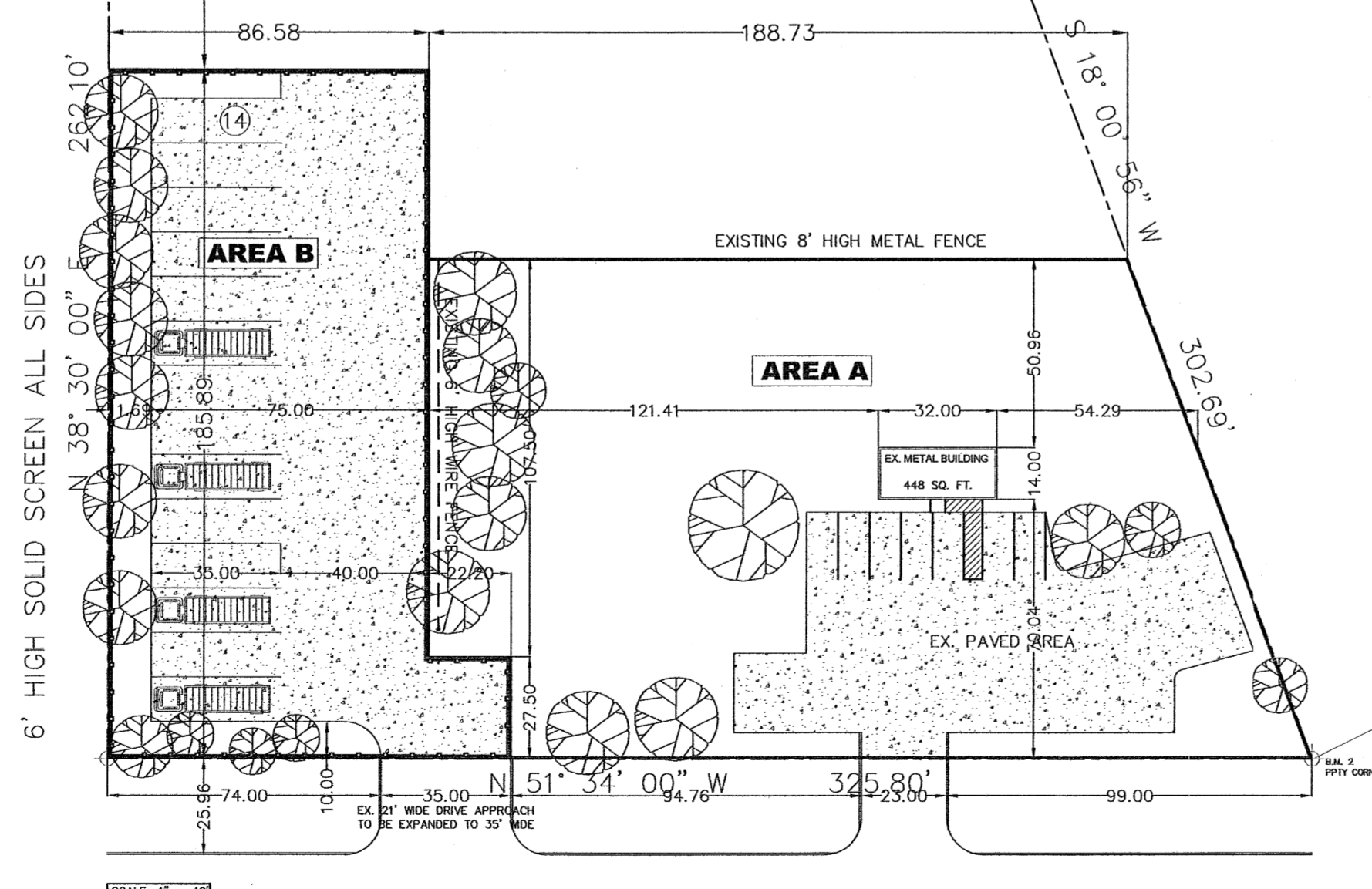
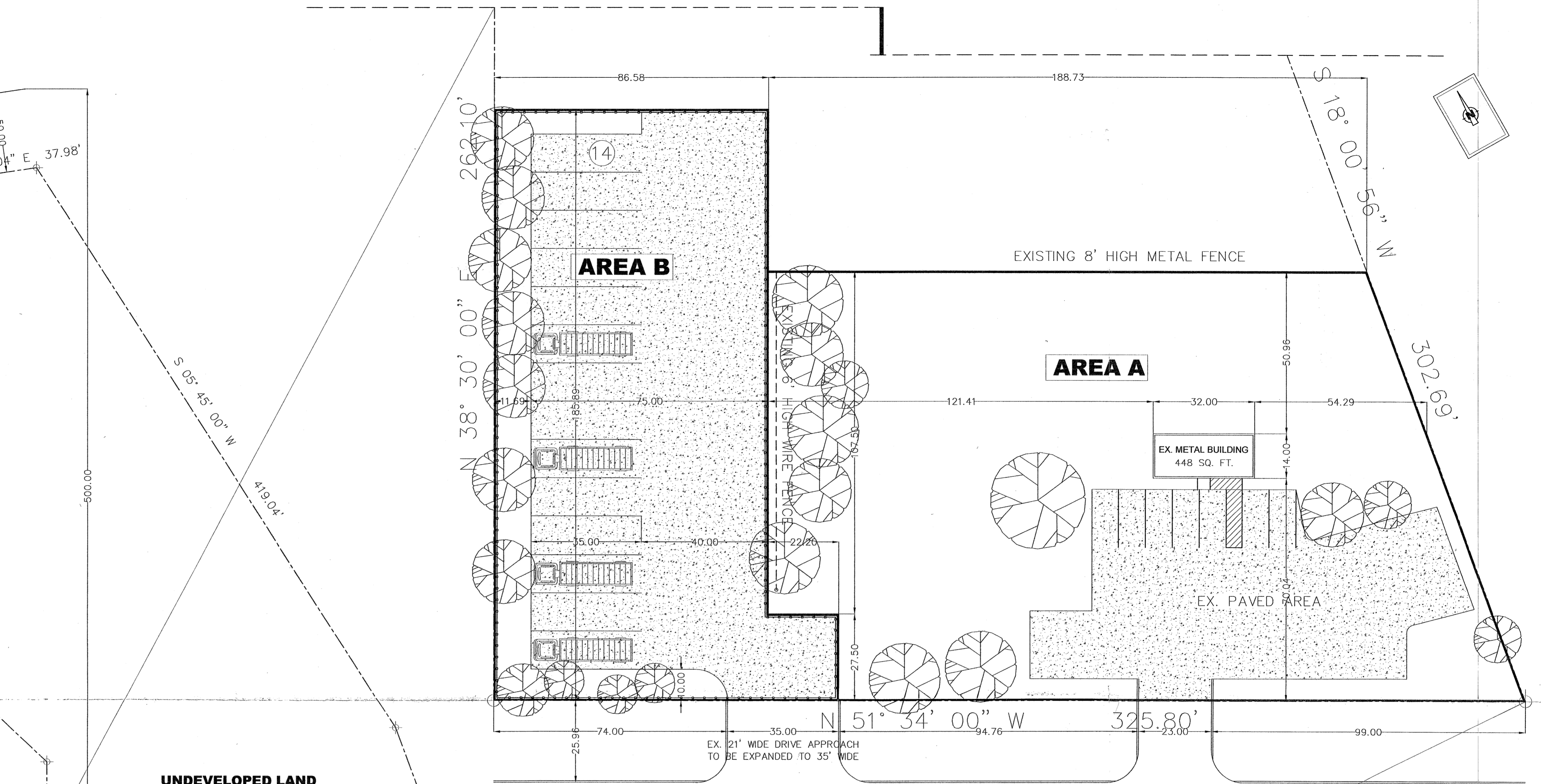
**LANDSCAPE LEGEND**

- 1 (10) 6"-12" QUERCUS DRUMMONDII
- 2 (7) 5"-10" CALIPER OAK
- 3 (3) 8"-12" CARYA ILLINOINENSIS
- 24" HIGH SHRUB @ 36" C-C

STAKE ONLY IF REQUIRED, TWO 2" STAKES AT LEAST 2" OUTSIDE OF THE ROOT BALL AND SET 6" MIN. INTO UNDISTURBED SOIL. CUT OFF BELOW FIRST MAJOR BRANCH OR PLACE OUTSIDE OF CANOPY.



**PLANTING DETAIL**  
NOT TO SCALE



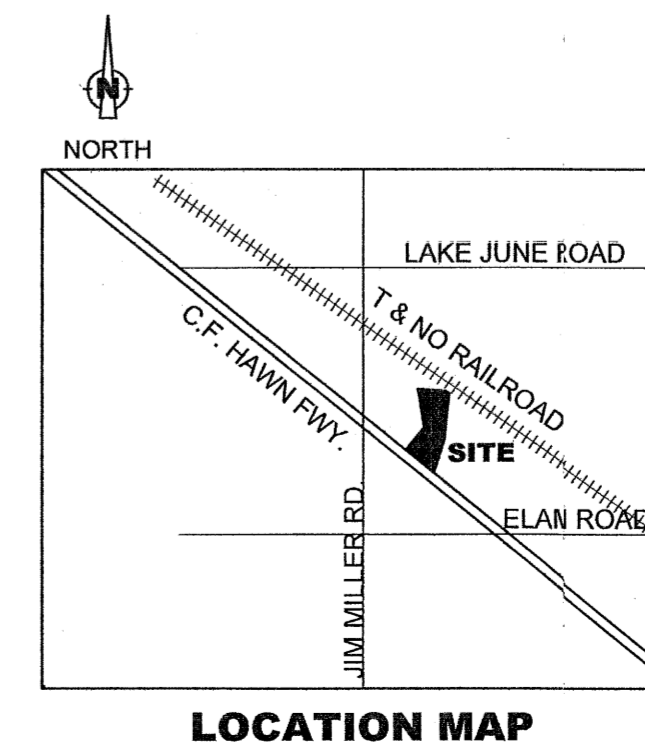
C.F. HAWN FREEWAY

**AREA "A" GENERAL DATA:**

LAND AREA: 0.648 ACS.  
USE: VEHICLE DISPLAY, SALES & SERVICE  
HEIGHT / STORIES: 18' / 1 STORY  
REGULAR PKG. SPACES: 0  
LOT COVERAGE: 1.5%

**AREA "B" GENERAL DATA:**

LAND AREA: 0.383 ACS.  
LAND USE: COMMERCIAL MOTOR VEHICLE REPAIRS  
COMMERCIAL PKG. SPACES: 14



102852

28053

APPROVED BY  
CITY COUNCIL  
NOV 10 2010

*Deborah Wittoria*  
City Secretary

Specific Use Permit  
No. 1814

Approved  
City Plan Commission  
October 21, 2010

SITE & LANDSCAPE PLAN			
7216 C.F. HAWN FREEWAY			
Z 090-142 (RB)			
DEPARTMENT OF CURRENT PLANNING			
CITY OF DALLAS			
DESIGN BY:	DRAWN BY:	DATE:	SCALE:
ARANDA	ARANDA	SEPTEMBER 13, 2010	1" = 40'